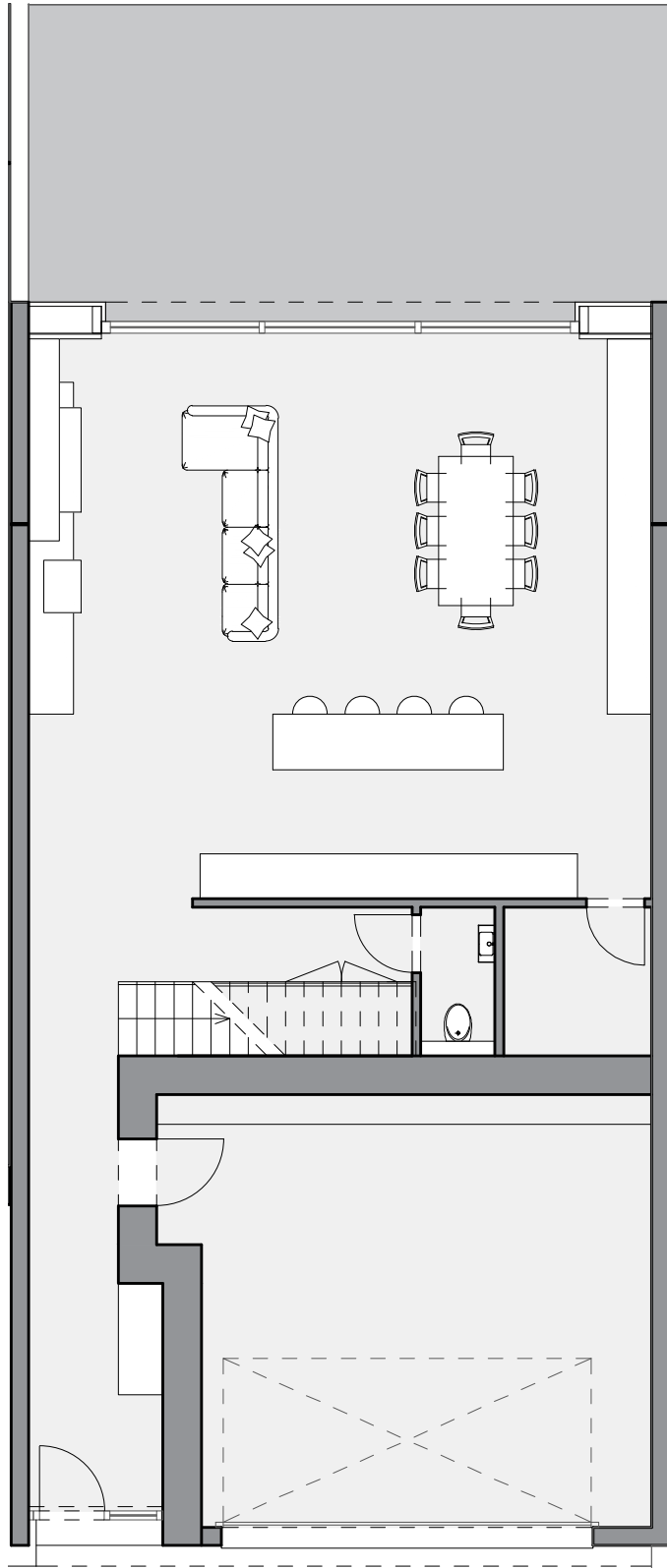


HILLSIDE

RUE MICHEL . KAYL



SURFACES INTERIEURES

REZ DE CHAUSSEE

| | |
|----------------|----------------------|
| HALL D'ENTREE | 9,18 m ² |
| DEGAGEMENT | 8,05 m ² |
| TOILETTE | 2,00 m ² |
| CELLIER | 3,98 m ² |
| SEJOUR CUISINE | 63,04 m ² |
| GARAGE DOUBLE | 36,42 m ² |

ETAGE

| | |
|---------------------|----------------------|
| HALL | 19,42 m ² |
| CHAMBRE 01 | 14,26 m ² |
| CHAMBRE 02 | 15,78 m ² |
| SALLE DE DOUCHE 01 | 4,41 m ² |
| TECHNIQUE BUANDERIE | 5,34 m ² |
| CHAMBRE 03 | 15,99 m ² |
| CHAMBRE 04 | 15,90 m ² |
| SALLE DE DOUCHE 02 | 7,68 m ² |

ETAGE EN RETRAIT

| | |
|-------------------|----------------------|
| ESPACE DE VIE | 36,26 m ² |
| CHAMBRE PARENTALE | 29,21 m ² |

TOTAL SURF. INTERIEURES 286,92 m²

SURFACES ANNEXES

REZ DE CHAUSSEE

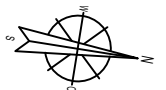
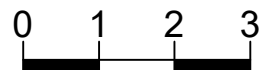
| | |
|----------|----------------------|
| TERRASSE | 34,49 m ² |
|----------|----------------------|

ETAGE EN RETRAIT

| | |
|-------------------------|----------------------|
| TERRASSE FACADE ARRIERE | 14,14 m ² |
| TERRASSE FACADE AVANT | 15,82 m ² |

TOTAL SURF. ANNEXES 64,45 m²

TOTAL 351,37 m²



KABE
REAL ESTATE DEVELOPMENT

Maître d'ouvrage:

KABE SARL
21, rue Bechel
L- 3611 KAYL



Architecte:

Cabinet Anna IVANOVA SARL
77, rue Michel Hack
L- 3240 BETTEMBOURG

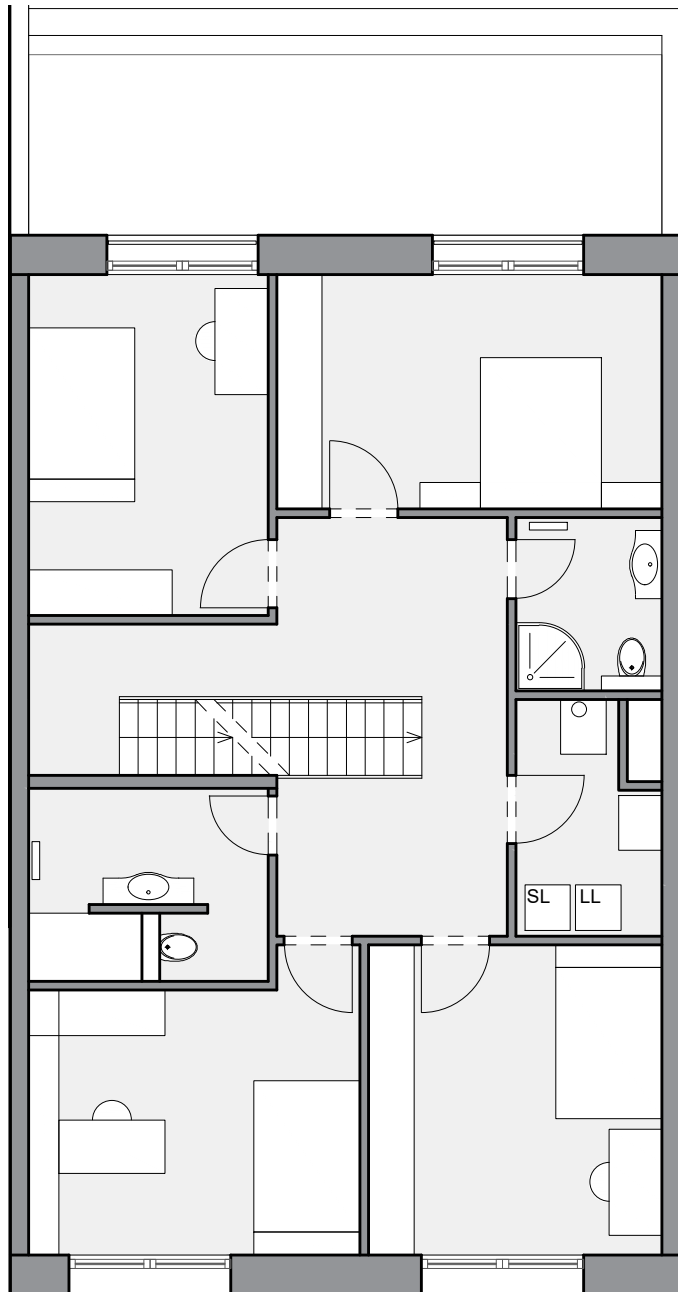
MAISON B - PLAN DU REZ-DE-CHAUSSEE

18 01 2021

1 / 100°

HILLSIDE

RUE MICHEL . KAYL



SURFACES INTERIEURES

REZ DE CHAUSSEE

| | |
|----------------|----------------------|
| HALL D'ENTREE | 9,18 m ² |
| DEGAGEMENT | 8,05 m ² |
| TOILETTE | 2,00 m ² |
| CELLIER | 3,98 m ² |
| SEJOUR CUISINE | 63,04 m ² |
| GARAGE DOUBLE | 36,42 m ² |

ETAGE

| | |
|---------------------|----------------------|
| HALL | 19,42 m ² |
| CHAMBRE 01 | 14,26 m ² |
| CHAMBRE 02 | 15,78 m ² |
| SALLE DE DOUCHE 01 | 4,41 m ² |
| TECHNIQUE BUANDERIE | 5,34 m ² |
| CHAMBRE 03 | 15,99 m ² |
| CHAMBRE 04 | 15,90 m ² |
| SALLE DE DOUCHE 02 | 7,68 m ² |

ETAGE EN RETRAIT

| | |
|-------------------|----------------------|
| ESPACE DE VIE | 36,26 m ² |
| CHAMBRE PARENTALE | 29,21 m ² |

TOTAL SURF. INTERIEURES 286,92 m²

SURFACES ANNEXES

REZ DE CHAUSSEE

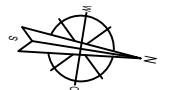
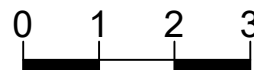
| | |
|----------|----------------------|
| TERRASSE | 34,49 m ² |
|----------|----------------------|

ETAGE EN RETRAIT

| | |
|-------------------------|----------------------|
| TERRASSE FACADE ARRIERE | 14,14 m ² |
| TERRASSE FACADE AVANT | 15,82 m ² |

TOTAL SURF. ANNEXES 64,45 m²

TOTAL 351,37 m²



KABE
REAL ESTATE DEVELOPMENT

Maître d'ouvrage:

KABE SARL
21, rue Bechel
L- 3611 KAYL



Architecte:

Cabinet Anna IVANOVA SARL
77, rue Michel Hack
L- 3240 BETTEMBOURG

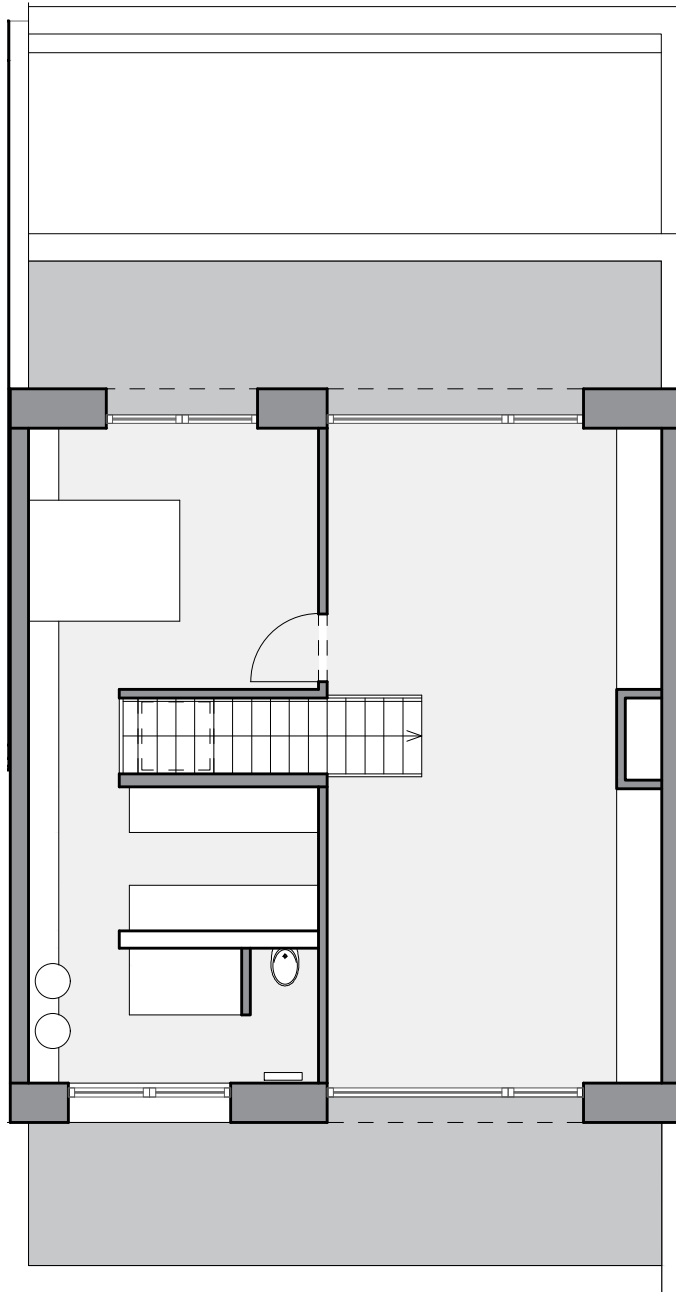
MAISON B - PLAN DE L'ETAGE

18 01 2021

1 / 100°

HILLSIDE

RUE MICHEL . KAYL



SURFACES INTERIEURES

REZ DE CHAUSSEE

| | |
|----------------|----------------------|
| HALL D'ENTREE | 9,18 m ² |
| DEGAGEMENT | 8,05 m ² |
| TOILETTE | 2,00 m ² |
| CELLIER | 3,98 m ² |
| SEJOUR CUISINE | 63,04 m ² |
| GARAGE DOUBLE | 36,42 m ² |

ETAGE

| | |
|---------------------|----------------------|
| HALL | 19,42 m ² |
| CHAMBRE 01 | 14,26 m ² |
| CHAMBRE 02 | 15,78 m ² |
| SALLE DE DOUCHE 01 | 4,41 m ² |
| TECHNIQUE BUANDERIE | 5,34 m ² |
| CHAMBRE 03 | 15,99 m ² |
| CHAMBRE 04 | 15,90 m ² |
| SALLE DE DOUCHE 02 | 7,68 m ² |

ETAGE EN RETRAIT

| | |
|-------------------|----------------------|
| ESPACE DE VIE | 36,26 m ² |
| CHAMBRE PARENTALE | 29,21 m ² |

TOTAL SURF. INTERIEURES 286,92 m²

SURFACES ANNEXES

REZ DE CHAUSSEE

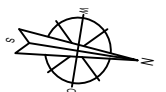
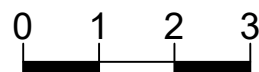
| | |
|----------|----------------------|
| TERRASSE | 34,49 m ² |
|----------|----------------------|

ETAGE EN RETRAIT

| | |
|-------------------------|----------------------|
| TERRASSE FACADE ARRIERE | 14,14 m ² |
| TERRASSE FACADE AVANT | 15,82 m ² |

TOTAL SURF. ANNEXES 64,45 m²

TOTAL 351,37 m²



KABE
REAL ESTATE DEVELOPMENT

Maître d'ouvrage:

KABE SARL
21, rue Bechel
L- 3611 KAYL

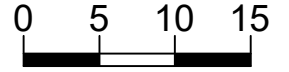
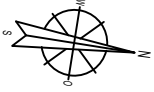


Architecte:

Cabinet Anna IVANOVA SARL
77, rue Michel Hack
L- 3240 BETTEMBOURG

HILLSIDE

RUE MICHEL . KAYL



Maître d'ouvrage:

KABE SARL
21, rue Bechel
L- 3611 KAYL



Architectes:

Cabinet Anna IVANOVA SARL
77, rue Michel Hack
L- 3240 BETTEMBOURG